

A ZINC MINER IN THE MAKING



May 2013

TSX-V: FV | FSE: F5V | www.firestoneventures.com

FIRESTONE
VENTURES INC.

> Cautionary Disclaimer

FORWARD LOOKING STATEMENT

This presentation contains forward looking statements; including in particular, statements about Firestone Ventures Inc.'s plans, strategies and prospects. These have been based on the Company's current assumptions, expectations and projections about future events.

Although the Company believes that the expectations reflected in these forward looking statements are reasonable, the Company can give no assurance that these expectations will prove to be correct or that the results anticipated in the forward looking statements will be achieved. Those forward looking statements include risks and uncertainties, which relate to, amongst other things, market conditions, industry uncertainty and other such factors which may cause the Company's actual results to be materially different.

> Firestone – Advancing our Zinc Assets to Market

- ▶ Firestone is focused on development of high grade Zn-Pb-Ag deposits in Guatemala
 - ▶ 100% ownership in >700 sq km land package
- ▶ Main Asset – Torlon Hill 100% interest, royalty free
 - ▶ NI 43-101 Zn-Pb-Ag mineral resource
 - ▶ High grade zinc at surface
 - ▶ Positive PEA: after tax/royalty NPV USD \$21.7M*
 - ▶ CAPEX USD \$26M (including feas/permitting)
 - ▶ Open for expansion
 - ▶ Access to available infrastructure
 - ▶ Anticipated production in Q1/Q2 2015
- ▶ Pipeline of zinc projects to extend mine life: exploration success continues with five drill ready



* Commodity pricing \$0.80 Zn, \$0.80 Pb, \$25 Ag at a 5% discount rate

Our Focus:

Identify and explore zinc and related base metal prospects with a focus on the Americas.

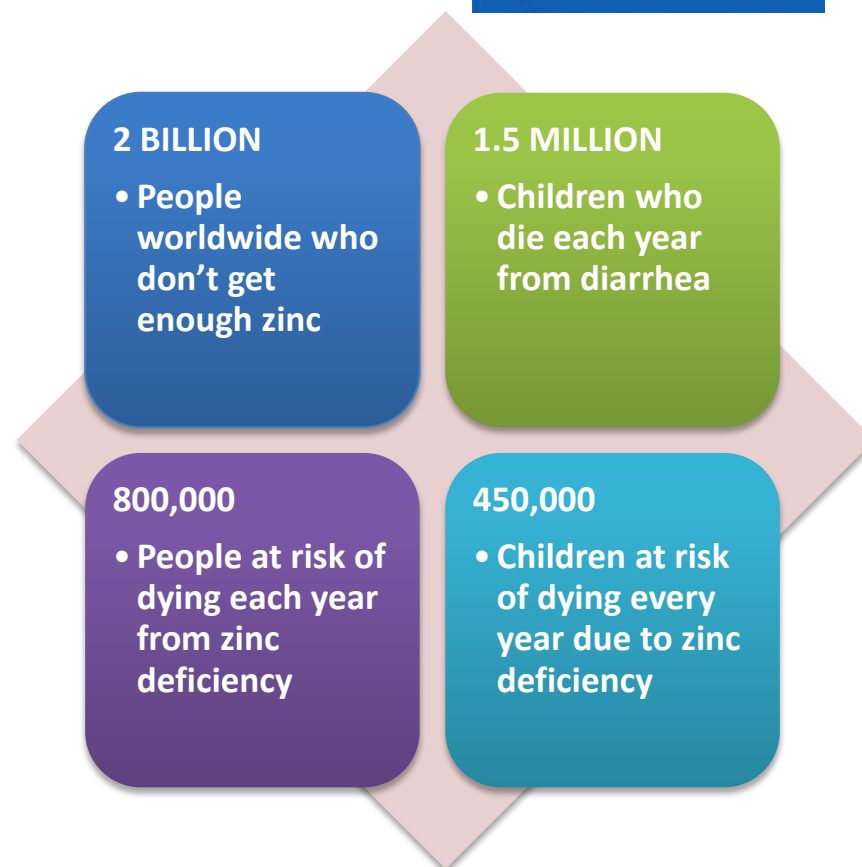
Our Objective:

*To advance the Torlon district to production,
and to*

*Define additional economically feasible zinc
deposits.*

> Why Zinc?

- ▶ Zinc is a natural component of the earth's crust and an inherent part of our environment. Zinc is present not only in rock and soil, but also in air, water and the biosphere. Plants, animals and humans contain zinc.
- ▶ Zinc is one of the eight essential trace elements needed for human health and proper growth in children. It is the second most common trace element in the body after iron
- ▶ High profile meetings (Copenhagen Consensus) and partnerships between the International Zinc Association, UNICEF, the United Nations have focused on the global zinc deficiency issue.
- ▶ Zinc is 100 percent recyclable. Over 80 percent of the zinc available for recycling is currently recycled.

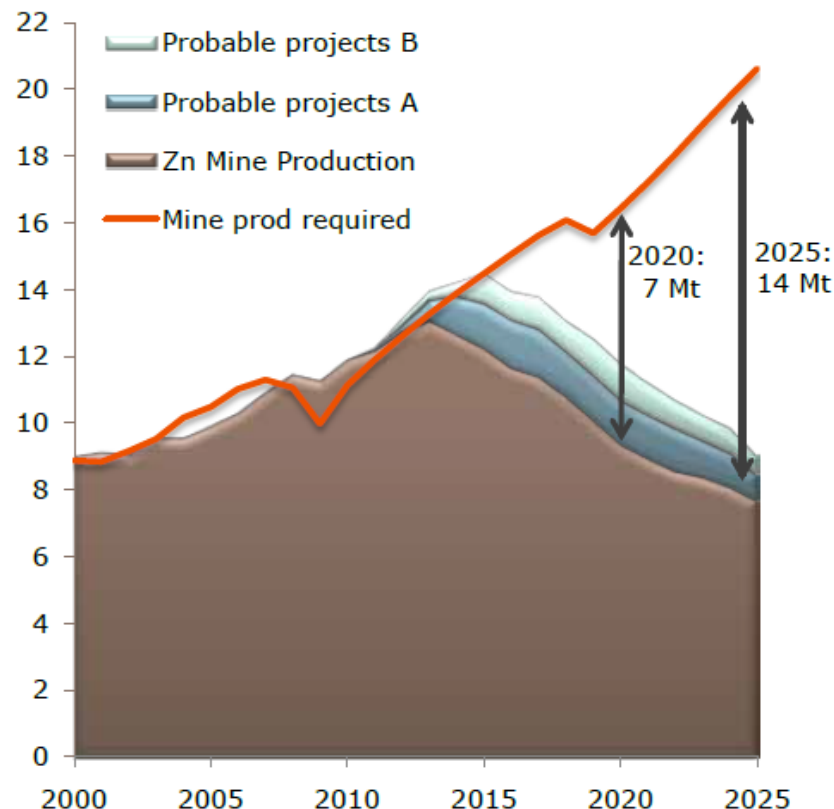


Increased Awareness of the Importance of Zinc to Global Food Security and Health

> Worldwide Zinc Supply & Demand

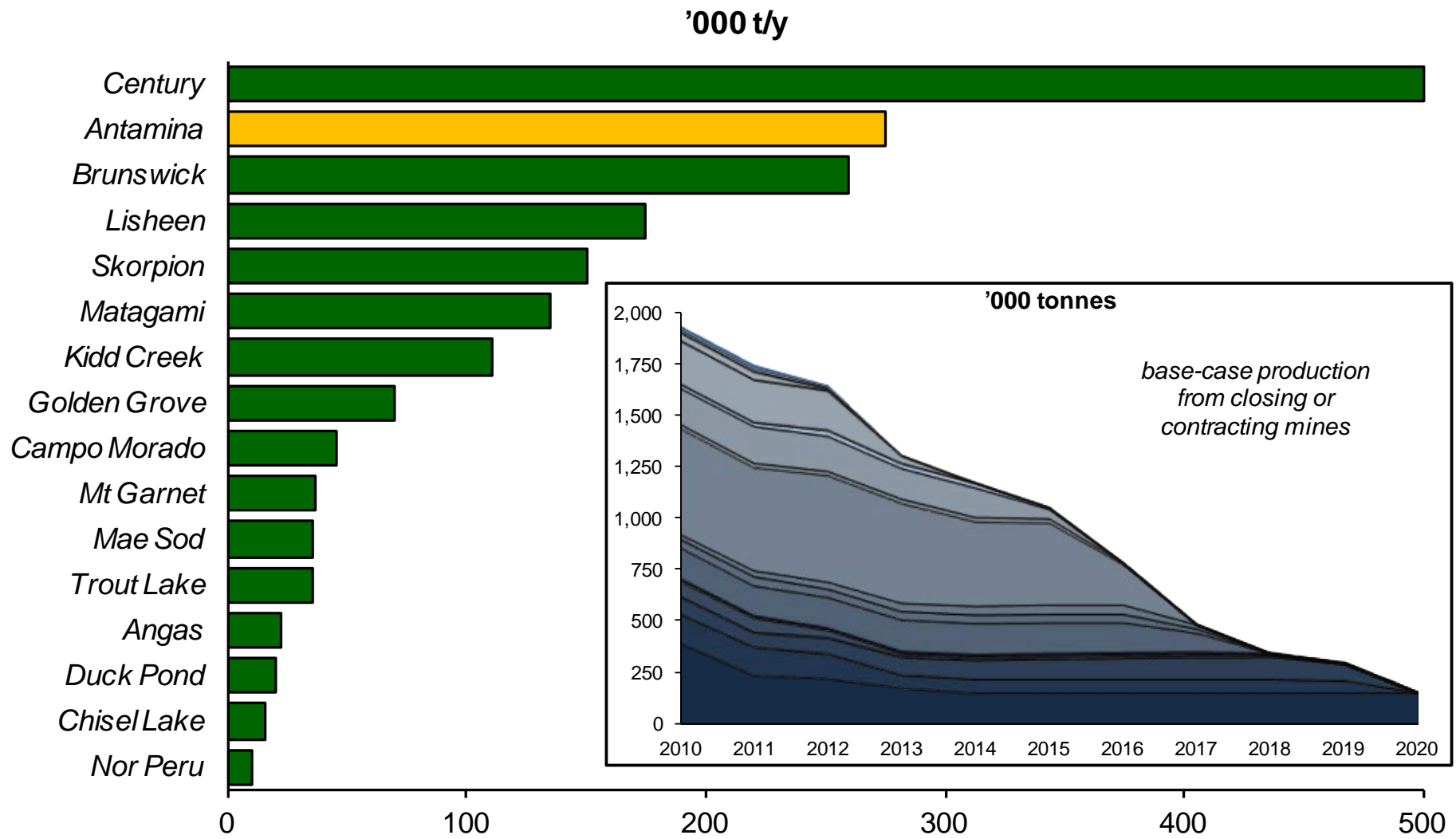
- ▶ The world market for zinc is very fragmented with many small zinc producers
- ▶ Few advanced zinc development projects and few new sources of zinc supply entering the market
- ▶ Pool of near term zinc concentrate production for smelter & refinery feed is rapidly decreasing
- ▶ Several of the world's major zinc-lead mines are slated to close in the coming five years due to lack of ore.
- ▶ Sharp decline in available zinc concentrate with no new mine expansions and planned mine closures
- ▶ Analyst coverage increasing

Forecast global zinc mine production and consumption



> Some Large Mine Closures and Contractions Loom

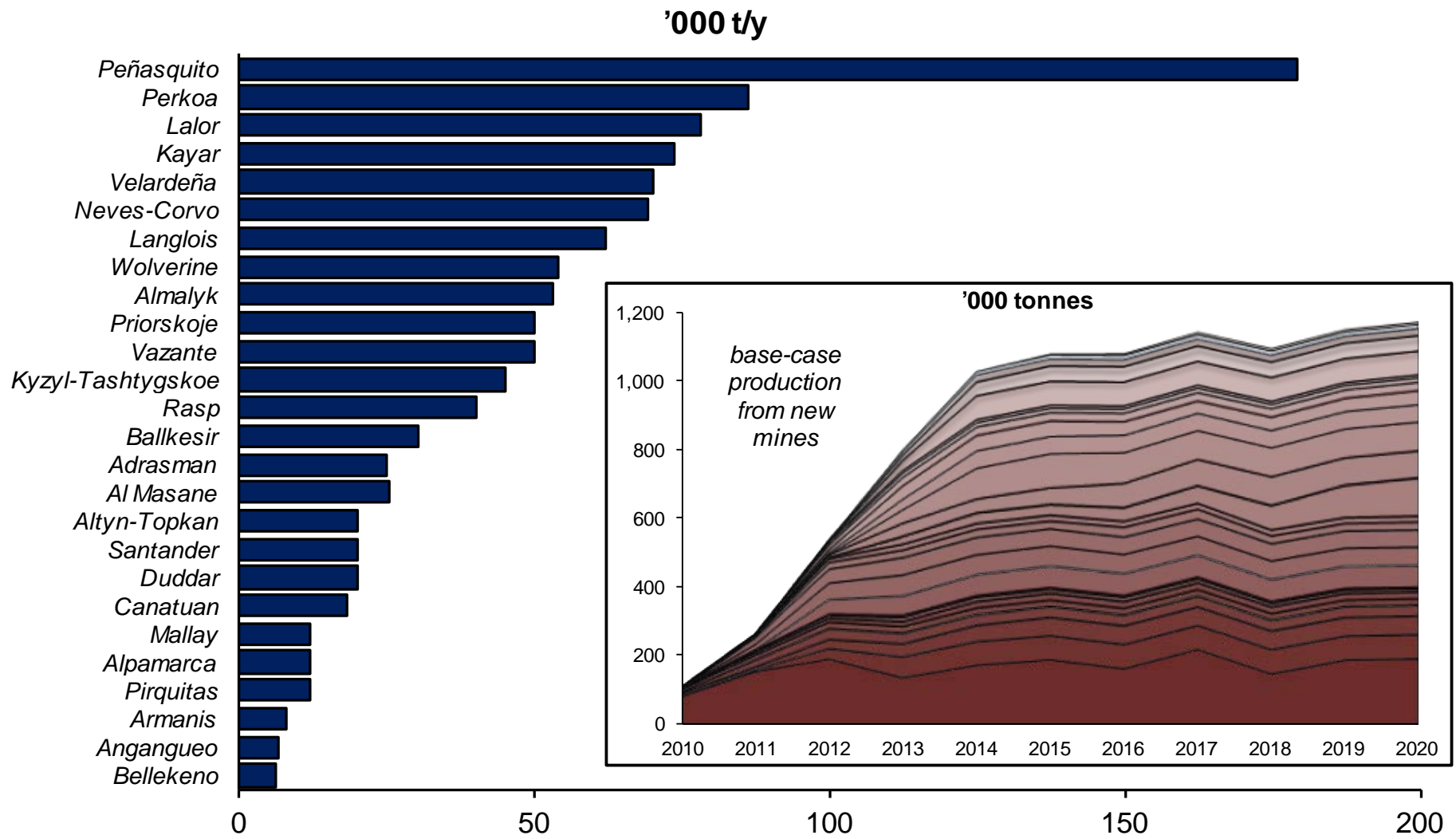
2010-2020 losses will be greater than 1.75Mt/y



Data: CRU January 2013 Zinc Market Outlook

> New Mines are Smaller, but more plentiful

2010-2020 increase will total 0.85Mt/y



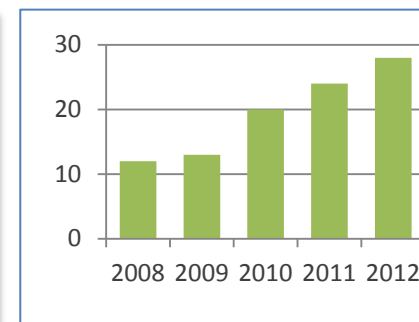
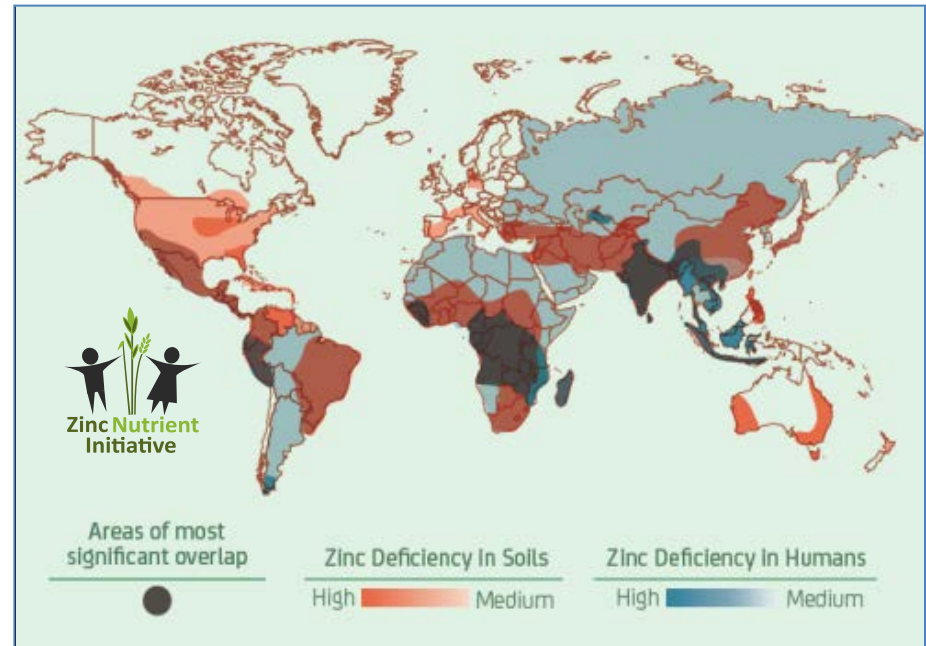
Data: CRU January 2013 Zinc Market Outlook

> Zinc is Essential for Crops: New Expanding Markets

- ▶ In 2012 China's Ministry of Agriculture announced that zinc would be included for the first time in their National Recommendation for fertilizers.
- ▶ The market potential is greatest in China, India and Brazil.
- ▶ 50% of global agricultural soils are depleted in zinc.
- ▶ Improving zinc uptake in crops using innovative technology

New global zinc fertilizer markets are projected to require up to an additional 920,000 tonnes of zinc*

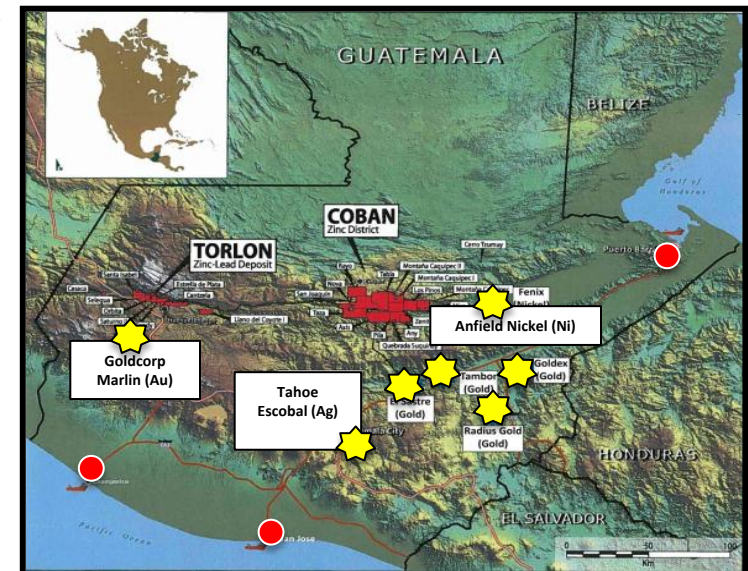
* 2012 report on zinc fertilizer markets - China International Capital Corporation



Left: crops without zinc; with zinc. Above: increasing zinc use in fertilizers in China

> Why Guatemala

- ▶ Democratic Government
- ▶ Underexplored with no Modern Exploration
- ▶ Access to Pacific and Atlantic Ports
- ▶ Access to major cities with supplies & services
- ▶ Aggressive infrastructure development
- ▶ Known Mining Law (1996)
- ▶ Peace Accords (1996)
- ▶ Other recently approved mining projects:
 - ▶ Goldcorp Inc.'s producing Marlin Gold Mine (2005)
 - ▶ Tahoe Resources – Escobal Silver Project (2013)
 - ▶ Anfield Nickel Corp. – Mayaniquel Nickel Project (2013)
 - ▶ Other zinc oxide direct shipping projects



> Torlon Hill – Firestone’s Opportunity

- ▶ 100% ownership royalty free
- ▶ Ready to extract with zinc exposed at surface
- ▶ Historic artisanal mine for >100 years
- ▶ Exploitation Licence, Surface Rights including timber rights with grandfathered title dating to 1901
- ▶ Road and power to property
- ▶ Direct Ownership
- ▶ Business Relationship
- ▶ Firestone was invited to make a business deal with the local people
- ▶ Deal signed in 2004
- ▶ 2008 Firestone completed



> Torlon 43-101 Compliant Zinc-Lead-Silver Resource

Oxide Zone

Category	Tonnes	Zinc %	Zinc (lbs)*	Lead %	Lead (lbs)*	Silver (g/t)	Silver (oz)*
Measured & Indicated	1,891,636	7.32	304,904,997	2.4	100,294,541	14.25	866,663
Inferred	169,705	4.42	16,502,114	1.96	7,317,680	12.53	68,367

Sulphide Zone

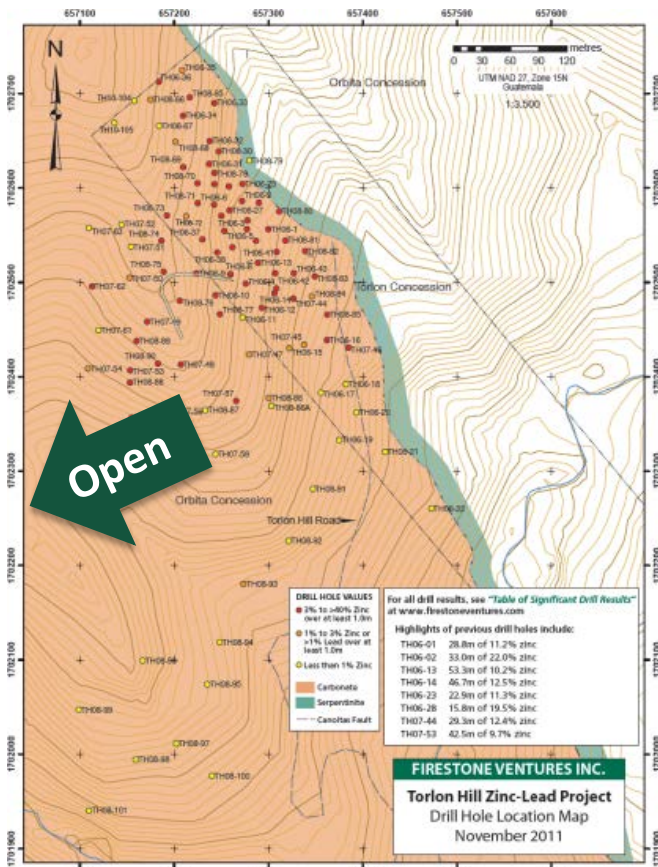
Category	Tonnes	Zinc %	Zinc (lbs)*	Lead %	Lead(lbs)*	Silver (g/t)	Silver (oz)*
Measured & Indicated	76,054	8.29	5,409,310	3.23	4,350,289	12.50	30,565
Inferred	36,291	6.46	2,227,542	2.79	1,620,759	10.47	42,782

Using 3% Zn eq and 1.5% Zinc cut-off and 35% Zn Composite Top-Cap

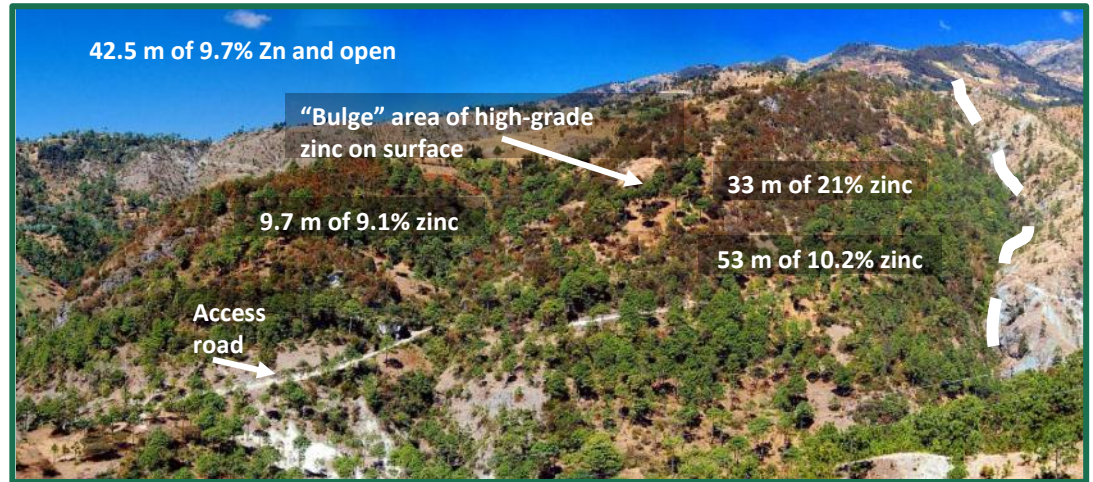
See NI 43-101 Technical Report dated December 2008 www.sedar.com

* The total contained metal assumes 100% recovery and does not indicate economic viability

Torlon Deposit Expansion Potential



Torlon deposit exposed at surface and open in two directions



- ▶ Torlon Hill is an intensely oxidized zinc-lead deposit
- ▶ 105 holes drilled (8,591m) with deepest hole 186m
- ▶ Intersections include:

Hole	Thickness	Zinc	Lead	Silver
TH06-2	33.0 m	22.0%	1.4%	7.5 g/t
TH06-13	53.3 m	10.2%	1.7%	13.0 g/t
TH06-14	46.7 m	12.5%	0.4%	4.5 g/t
TH06-23	22.9 m	11.3%	3.4%	25.0 g/t
TH06-27	19.8 m	13.2%	2.9%	20.0 g/t
TH06-28	15.8 m	19.5%	2.3%	16.0 g/t
TH06-41	25.6 m	10.1%	3.8%	15.0 g/t
TH07-44	29.3 m	12.4%	4.2%	18.0 g/t
TH07-53	42.5 m	9.7%	4.7%	20.0 g/t
TH08-80	19.8 m	10.0%	4.7%	13.8 g/t

> Torlon Hill Positive PEA Results

Assumptions

- ▶ Commodity Prices:
 - ▶ \$0.80/lb Zn
 - ▶ \$0.80/lb Pb
 - ▶ \$25/oz Ag
- ▶ FX: \$1.00 CAN/USA
- ▶ Resource >90% Measured & Indicated, no further drilling
- ▶ 3% government royalty

Results

- ▶ Capex \$26M
- ▶ \$21.7 Million NPV after tax & royalties
- ▶ 46% IRR & 2.2 year payback
- ▶ 5 year initial mine life
- ▶ Open pit with 75% free dig
- ▶ 2.57/1 strip ratio

PEA Results (plus see news release March 6, 2013)	
Mill Throughput	600,000 tpa
Grade	4.96%, Zn 1.76% Pb, 10.65 g/t Ag
Zinc/Lead/Silver Recoveries	71.5% Zn, 81.4% Pb, 76.8% Ag
Zinc Concentrate	35% Zn with 45% payable
Lead Concentrate *	60% Pb
LOM Production Zn	303,977 tonnes con containing 106,392 tonnes Zn metal
LOM Production Pb	71,632 tonnes con containing 42,979 tonnes Pb metal
LOM Production Silver (reports to lead con)	766,800 ounces
Operating Cost	\$42.41/tonne
Cash Cost/lb Zn with and without credits	\$0.56 and (\$0.37)
Cash Cost/lb Pb with and without credits	\$0.66 and (\$1.68)

> Torlon Hill – Proposed Project Timelines

	Cost (US\$)	\$1.5M		\$26M	
		2013		2014	
		2015			
PEA		→			
Feasibility Study	\$1,145,000	→			
EIA including baseline	\$350,000				
Resource Modelling	\$30,000				
Updated Metallurgical Report	\$142,000				
Infrastructure and Land	\$275,000				
Geotechnical	\$100,000				
Mine Design	\$86,000				
Management	\$162,000				
Pre-Development Works*	\$2,900,000	→			
Full Construction*	\$23,300,000			→	
Production				- - - →	
Ongoing Exploration		→		→	

* Includes a 20% contingency; all costs \pm 20%. All the above is best case scenario and funding dependant.

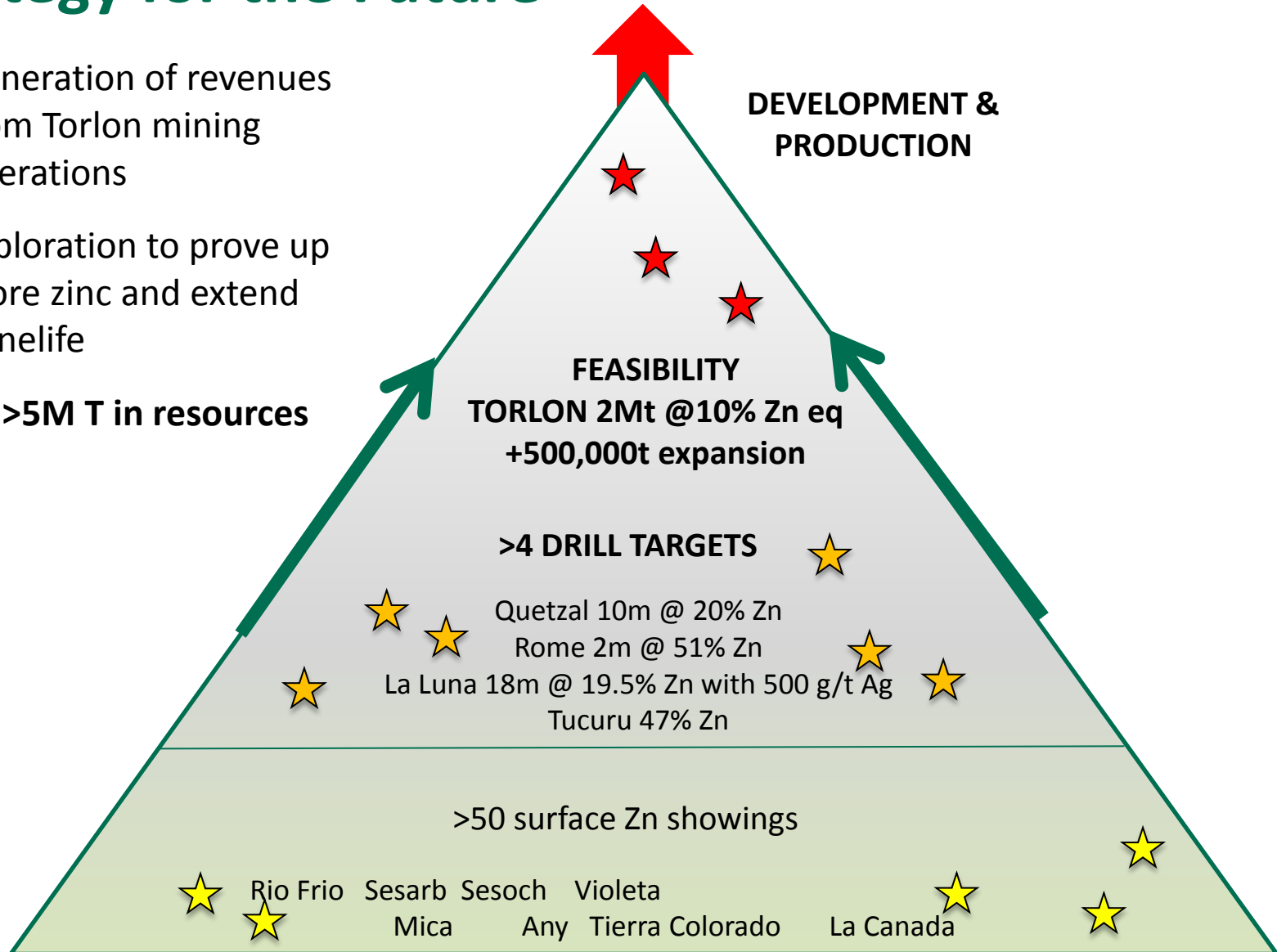
Upcoming Catalysts Through Next Steps

- Resource update
- Update Metallurgy (recoveries)
- EIA Completion
- Off-take Agreements or Strategic Partnering

> Strategy for the Future

- ▶ Generation of revenues from Torlon mining operations
- ▶ Exploration to prove up more zinc and extend minelife

Goal: >5M T in resources



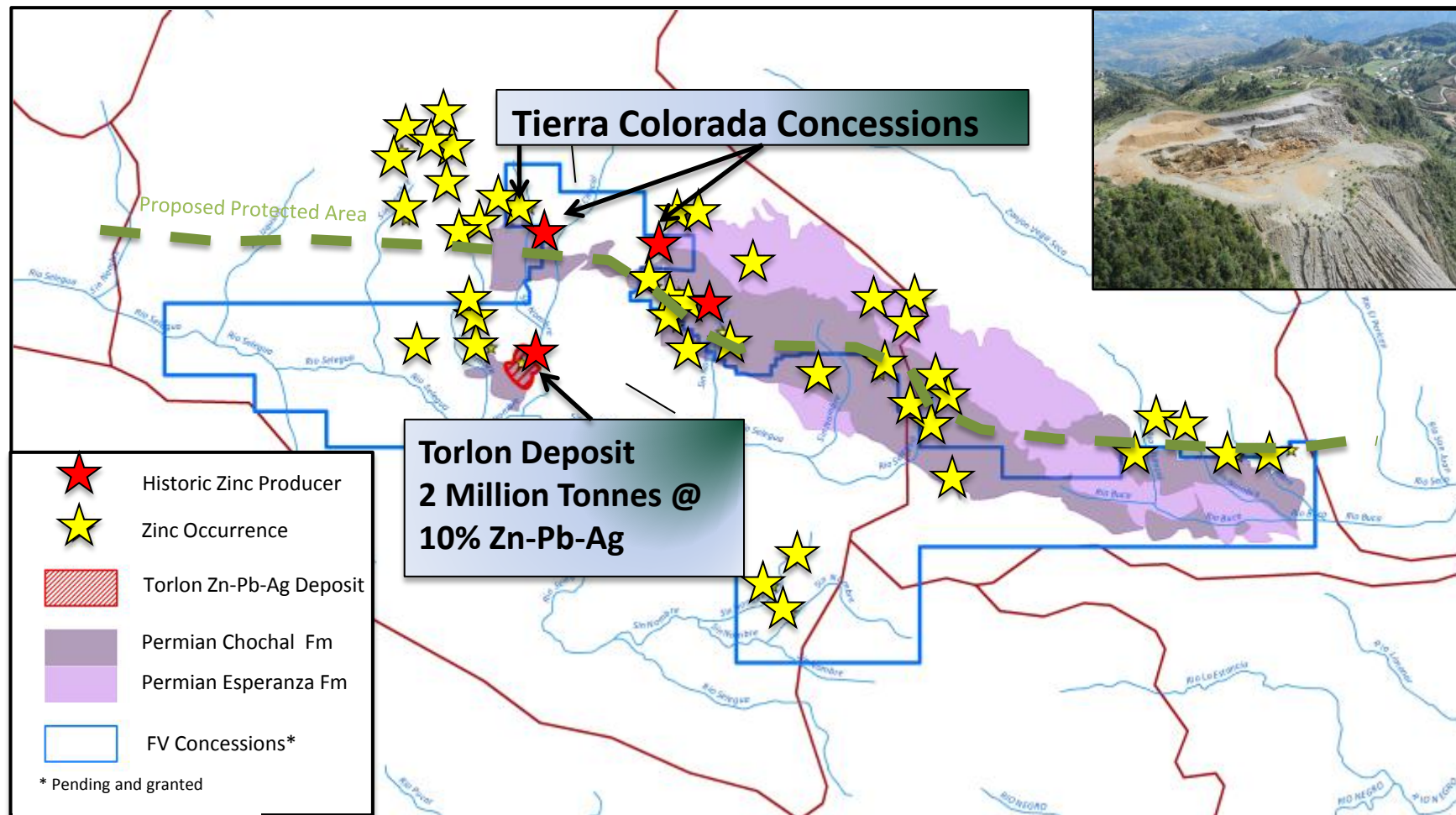
> Guatemala Zinc Belt – Under-Explored Zinc District

- ▶ New **District Scale Zinc** belt potential
- ▶ Underexplored with **no** modern exploration techniques
- ▶ Guatemala Zinc Belt (“GZB”) setting is typical of many globally significant zinc districts (e.g. Iran and China)
- ▶ The geological and geographic setting in Guatemala is also ideal for “zinc-oxide” type deposit formation and deeper sulphide sources
- ▶ At the junction of three crustal plates
- ▶ Target area: 250km carbonate belt stretching across central Guatemala
- ▶ **Numerous known historic oxide and sulphide zinc mines**



> Guatemala's Zinc Belt: Torlon District

Firestone's Torlon Deposit Key to Prolific Zinc District



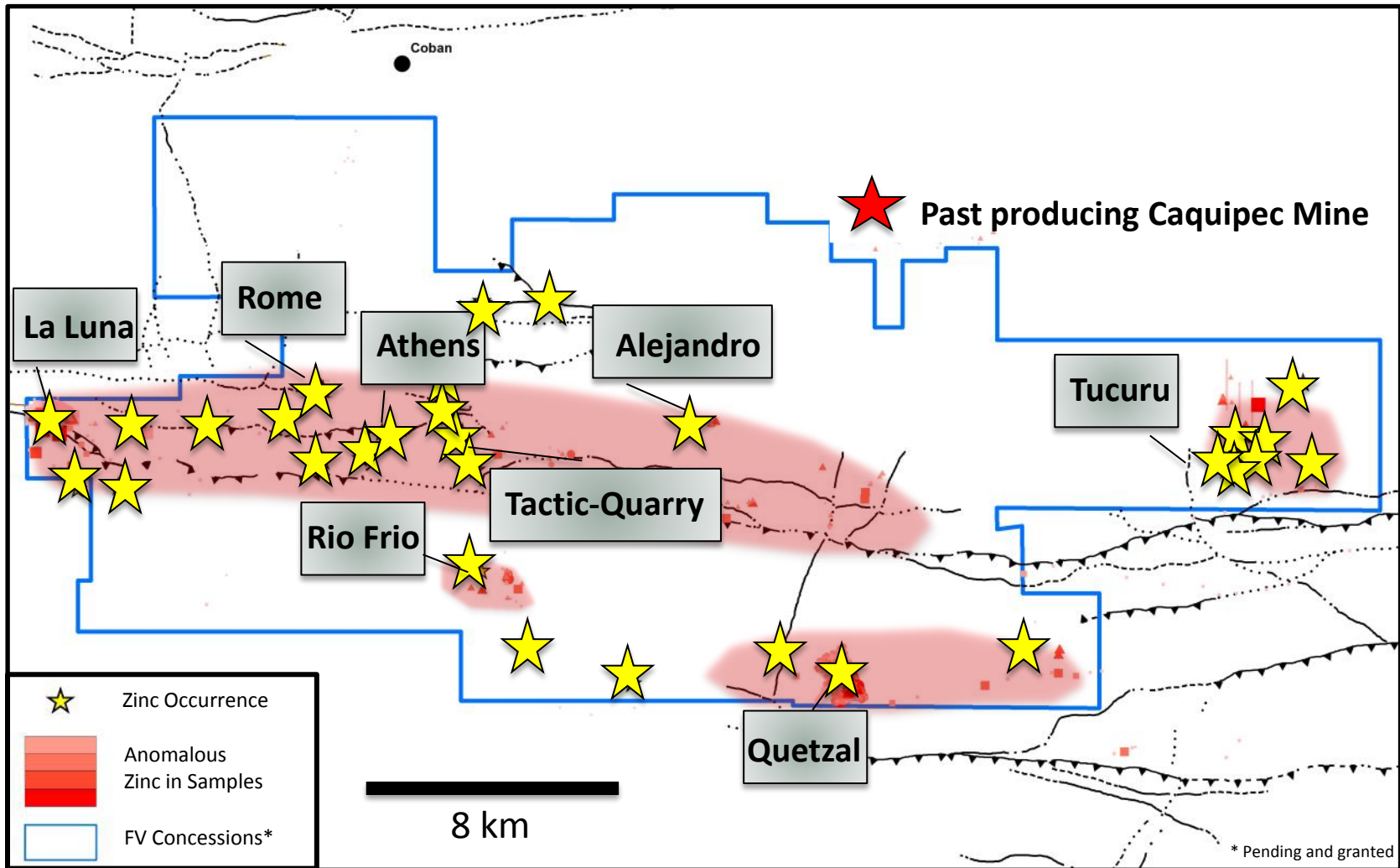
Proven zinc deposits with district potential

> Torlon Upside: Unexplored Colour Anomalies



- ▶ More than 25 road accessible colour anomalies identified
- ▶ Suggestive of weathered zinc mineralization
- ▶ Never been ground checked

> Guatemala Zinc Belt : Central-Coban



Significant upside for new discoveries: four drill ready zinc projects

> Central – La Luna Project

10-HOLE DRILL PROGRAM PLANNED

- ▶ Road accessible past producer
- ▶ Eleven Historic Tunnels – 2011 mapping & sampling results
 - 2m chip sample 36.12% Zn, 11.26% Pb, 79.5 g/t Ag
 - 2m chip sample 3.72% Zn, 38.89% Pb, 500.3 g/t Ag
 - 21m of chip sampling averaged 12.75% Zn, 10.84% Pb, 120.28 g/t Ag
 - 18m of chip sampling averaged 19.5% Zn, 3.92% Pb, 22.1 g/t Ag
- ▶ **Five mineralized zones over 3 km trend**
 - Juno Zone: no vegetation 250x50m, up to 4.12% Zn in soil sample and 42.08% Zn in rock grabs; discovery of 2-tonne high grade zinc boulder at surface (top)
 - Titan Zone: 6 tunnels covering 400x400m area, surface rock grab samples up to 45.53% Zn, 86 gpt Ag, and 5.5% Pb
 - 2011-2012: 1,282 soil and 249 rock samples



> Zinc Exploration in Guatemala



> Community Participation at all Stages

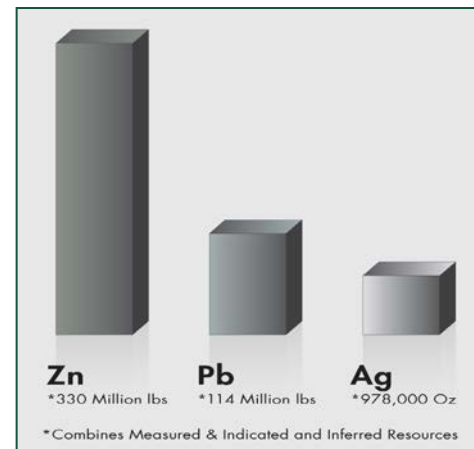
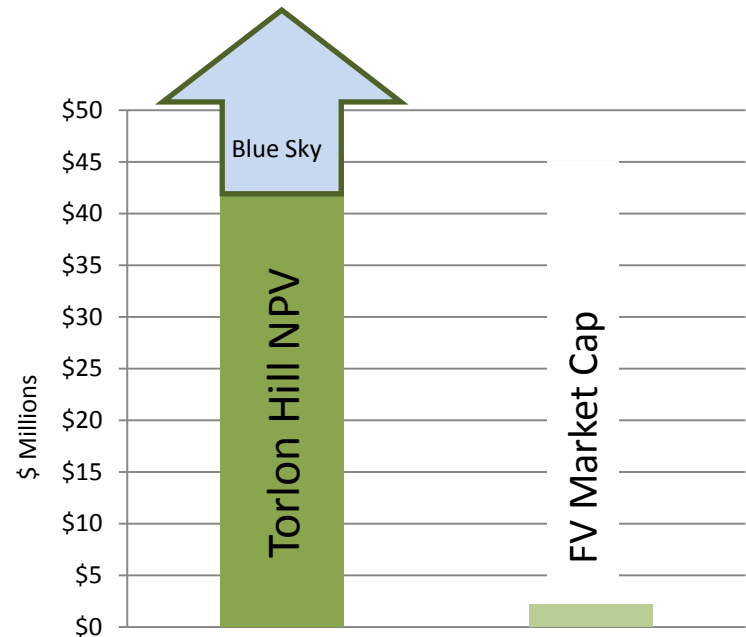
- ▶ Firestone has participated in many community projects from the beginning
 - ▶ El Vado river crossing
 - ▶ Hanging bridge repairs permits communities to bring vegetables and fruit to market
 - ▶ Church and school upgrades
 - ▶ Reforestation
 - ▶ Immunizations
- ▶ Signing of a Partnership Agreement with the Co-opertiva where all projects are collectively discussed and approved between the committees.
- ▶ Completion of an oral history project where Firestone recorded the history of Torlon Hill into a spanish/english book.



> Firestone's Value

Upcoming Catalysts

- ▶ Potential Torlon Hill resource update
- ▶ Feasibility Study
- ▶ EIA Completion
- ▶ Metallurgical Advancements
- ▶ Off-take Agreements or Strategic Partnering
- ▶ Exploration Success
- ▶ Fast Timelines
- ▶ Zinc Price Increases



> Corporate Profile

European Exposure

- ▶ **Pamela Strand**, M.Sc., P.Geol.
President & CEO, Director, Canada
- ▶ **Keith Barron, Ph.D.** - Chairman, Switzerland
- ▶ **Terry Tucker, P.Geo** - Director, Switzerland
- ▶ **Lori Walton**, M.Sc., G.G., P.Geo. - Director
- ▶ **John Kowalchuk**, P.Geo. - Director

- ▶ No Debt
- ▶ Major Shareholders:
 - ▶ Anglo Pacific ~10%
 - ▶ Minéro Mining 12% (engineering partner)
 - ▶ Insiders 8%
 - ▶ Haywood 20%

Capitalization Snapshot

Basic Shares Outstanding:	36,323,991
Options:	3,314,000
Warrants:	13,912,891
Fully Diluted Shares:	52,912,891
** Aug 27, 2012 – completed 5:1 share consolidation	
Market Capitalization:	~C\$2.0M

Firestone will advance the Torlon Deposit and fast track to market both a zinc concentrate and silver rich lead concentrate